

Thank you for purchasing the CAT EYE GAMEBIKE.

Please read this manual carefully before using this product. Safeguard the manual along with the warranty card.

What is the GAMEBIKE

The GAMEBIKE is a game controller which allows you to enjoy using a home video gaming machine while using a bicycle.

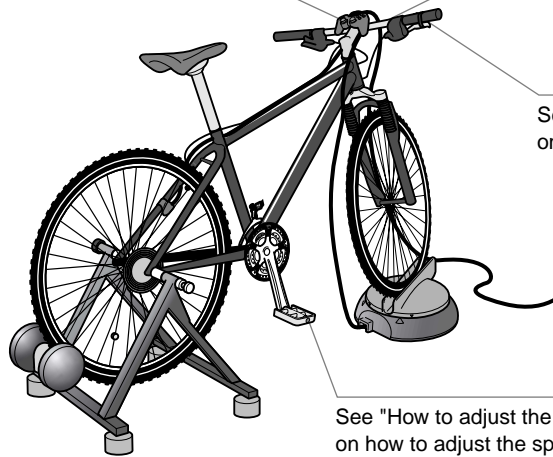
Reference: The GAMEBIKE controller controls various games using a bicycle and trainer not like a controller attached to a gaming device. The function of the gaming device itself or game software is neither expanded nor modified.

GAMEBIKE Controller

Brake button

Handlebar

See "How to adjust the GAMEBIKE" for information on how to adjust the steering sensitivity.



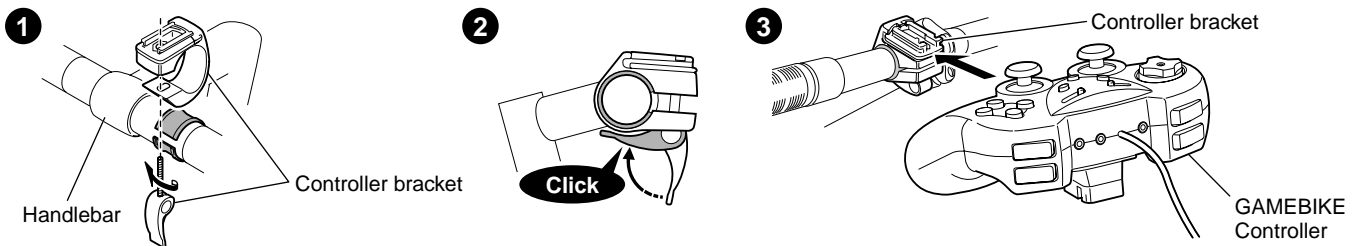
Pedals (speed)

See "How to adjust the GAMEBIKE" for information on how to adjust the speed sensitivity.

Bracket/Controller installation

Attach the controller bracket in the middle of the bicycle handlebar. Install the GAMEBIKE Controller by sliding it into the controller bracket.

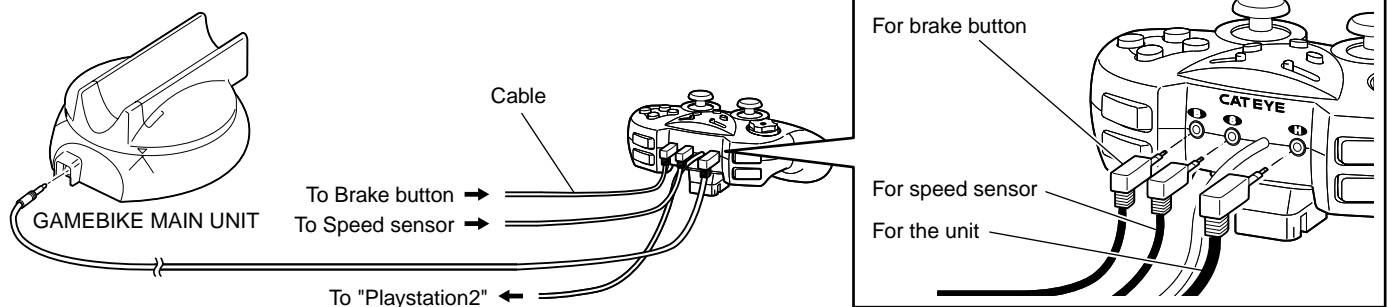
Reference: GAMEBIKE bracket is compatible with all CAT EYE headlamps.



Connecting the controller to the GAMEBIKE

Connect the pin jacks from the GAMEBIKE to the GAMEBIKE Controller.

Caution Do not plug in/unplug the GAMEBIKE pin jack while "Playstation2" is turned on. This may result in a malfunction of the "Playstation2" unit.

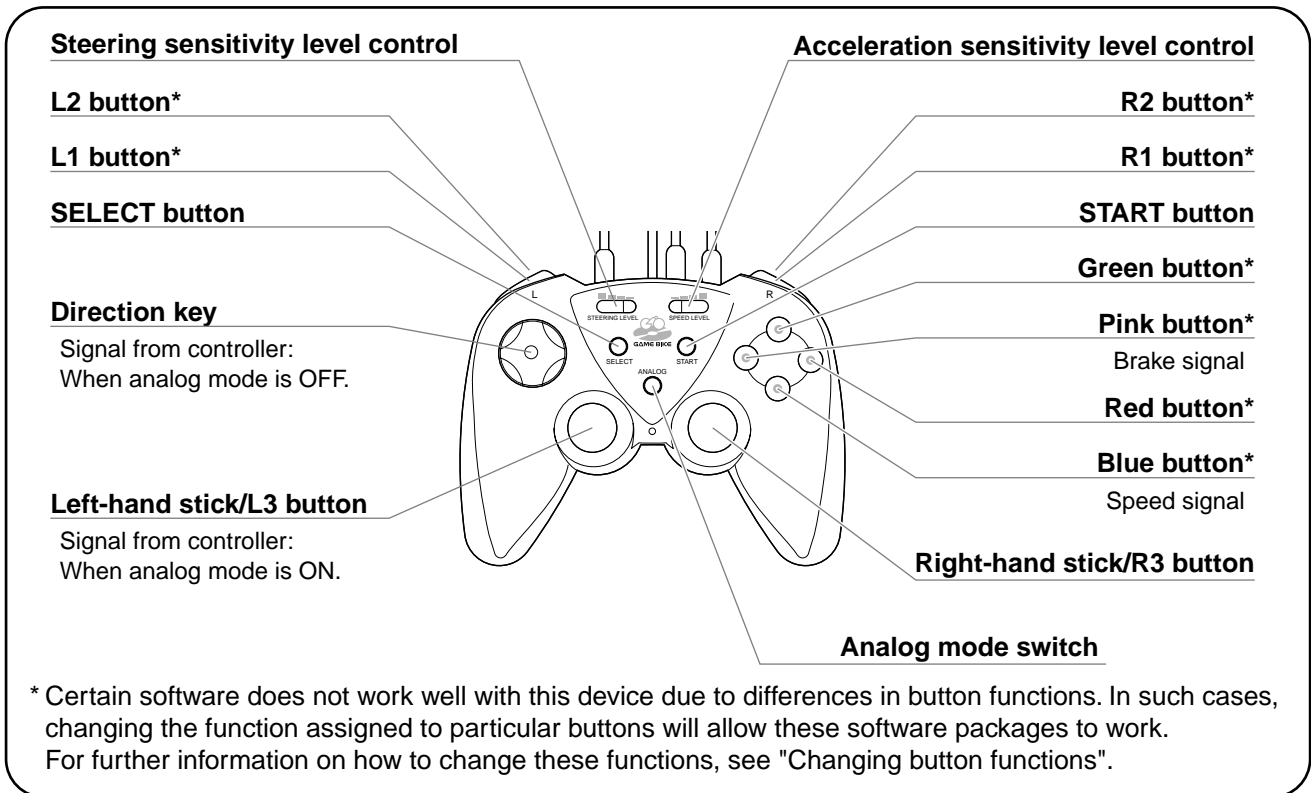


GAMEBIKE Controller

- Caution** • Before using this product, be sure to read the "Notes on using the GAMEBIKE Controller " and the "Notes on using the GAMEBIKE" in the GAMEBIKE Operation Manual.
- Certain software packages whose packaging or documentation provides no indication of analog compliance or compatibility will not work in analog mode.
 - Certain software packages will not switch mode even if the analog mode switch is pressed. In the case of certain software packages, the mode switches automatically.

Important: Depending on the software, GAMEBIKE operation sometimes takes precedence over the GAMEBIKE Controller and prevents operation of the controller.

Reference: If the GAMEBIKE Controller is not connected to the GAMEBIKE, it can be used as a controller for "Playstation 2". In this case, the level controls for the GAMEBIKE will not be activated.



Vibration function

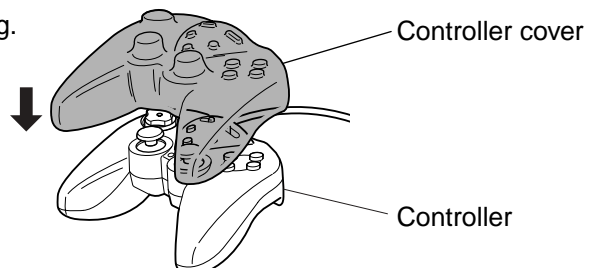
The GAMEBIKE Controller is a virtual game controller with an integrated vibration function. Vibration ON/OFF can be switched via the software screen. See the software operation manual for further details. Some software performs the vibration function automatically even though this function may not explicitly have been explained in the manual.

- Caution** • Before using the vibration function, read the "Notes on using the GAMEBIKE Controller" carefully.
- When not in use, turn off the unit or disconnect the GAMEBIKE Controller from the unit.

Important When the vibration mode is on while playing the game. The vibration sometimes cause the controller to inadvertently switch riding positions on the screen. (this function is usually controlled by pressing the green button. If the vibration has this effect, simply turn off the vibration mode.

Controller Cover Care

While using GAMEBIKE, the user may perspire/sweat while training. To prevent sweat from getting into the controller, please use the controller cover provided. Please wash and dry after use.

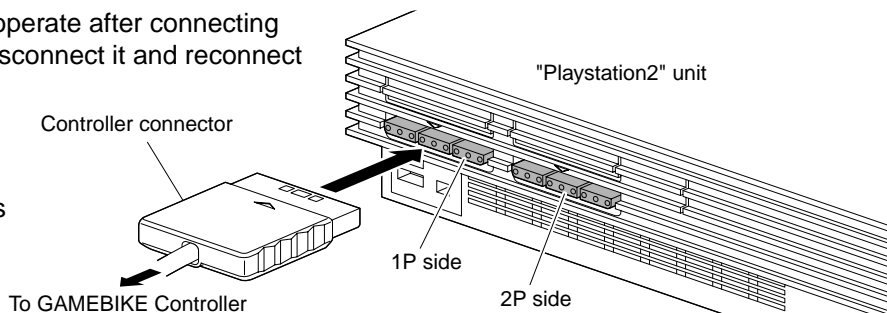


Connecting the device to Playstation2

This controller is compatible with the "Playstation2". Plug the connector of this device into the controller terminal located at the front of the "Playstation2". Consult the operating manual of the "Playstation2" unit, if necessary.

Important: If the GAMEBIKE does not operate after connecting it to the PlayStation2 unit, disconnect it and reconnect it again.

Reference: It is possible for two players to play simultaneously by connecting two GAMEBIKEs or connecting to a general controller.

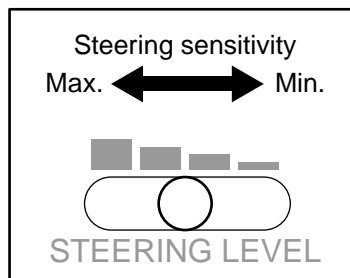


How to adjust the GAMEBIKE

• Adjusting the steering sensitivity

Turn on the "Playstation2", then slide the steering sensitivity control of the GAMEBIKE Controller while operating the handle of the bicycle on the race screen to adjust the steering sensitivity as required.

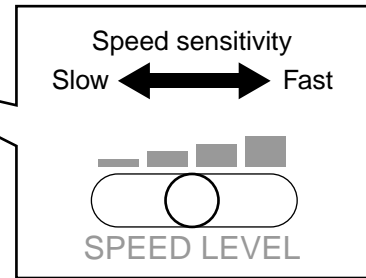
Caution Depending on the software, while moving the handlebar from Left to Right, the steering reaction on the game does not work.



• Adjusting the speed sensitivity

Turn on the "Playstation2", then slide the speed sensitivity control of the GAMEBIKE Controller while operating the pedal of the bicycle on the race screen to adjust the speed sensitivity as required.

Caution Depending on the software, while pedaling, the speed of the game does not register. This will cause the game not to move forward.



Button Function change

In the case of software with different button functions, change functions as follows:
The buttons to which functions can be assigned are green, pink, red, blue, L1, L2, R1 and R2.

<Operation>

Keep pressing the SELECT button until the following steps are completed:

1. Press the blue (or pink) button depending on the function to be changed.
The LED will change from constantly lit to blinking.
2. Press the default accelerator (or brake) button in the software currently being used.
The LED will change stop blinking and will be lit continuously, signifying that the function change is now complete.
(If analog mode is OFF, the LED will be off, signifying that the function change has been completed.)

• Revert to the original button function

While pressing the SELECT button, press the speed button (blue) or brake button (pink).

FCC

NOTE: This equipment has been tested and found to comply with the limits for a Class B digital device, pursuant to part 15 of the FCC Rules. These limits are designed to provide reasonable protection against harmful interference in a residential installation. This equipment generates, uses and can radiate radio frequency energy and, if not installed and used in accordance with the instructions, may cause harmful interference to radio communications. However, there is no guarantee that interference will not occur in a particular installation. If this equipment does cause harmful interference to radio or television reception, which can be determined by turning the equipment off and on, the user is encouraged to try to correct the interference by one or more of the following measures:



- Reorient or relocate the receiving antenna.
- Increase the separation between the equipment and receiver.
- Connect the equipment into an outlet on a circuit different from that to which the receiver is connected.
- Consult the dealer or an experienced radio/TV technician for help.

Symbols Legend

Symbol marks used for safety precautions in this manual

The descriptions accompanying the following symbol marks in this manual refer to very important issues in terms of your safety and handling of the unit.

You are strongly urged to observe these precautions carefully.

-  **Warning** Failure to observe this warning could result in serious injury or death.
-  **Caution** Failure to observe this warning could result in physical injury or damage to the GAMEBIKE.
- Important** Operations which require caution, items which should be observed in particular as well as certain additional information are presented in this manual.
- Reference** This symbol mark denotes helpful information ensuring proper usage.

GAMEBIKE Controller usage cautions!

Caution

- It has been reported that, in rare cases, some people have experienced certain physical symptoms, for example muscle spasms or temporary loss of consciousness as a result of stimulation from strong light rapidly changing on-screen images. Persons who have experienced such symptoms should consult a doctor before using this device. Moreover, if such symptoms should occur while watching the gaming screen, please consult a doctor immediately.
- A vibrating mechanism is incorporated into the GAMEBIKE controller; do not place the controller against the joints or against the head, elbow, knee, face or abdomen.
- Do not use the vibration function of the GAMEBIKE Controller if your fingers/hands/wrists/arms are broken/dislocated/sprained or if you have recently pulled a muscle. Vibrations from the device may exacerbate the condition.
- Make sure to take at least 15 minutes break for each hour of playing the game to avoid eye fatigue.
- Avoid using the device if you are tired or have not had enough sleep.
- Use the device in a well-lit room and as far away from a T.V. screen as possible.
- This controller is for home use only. Don't use this device for any other use other than intended.
- While using the game. Please use the controller cover to prevent sweat or moisture from entering the controller.
- While using the game. Handling operation is to be done with the bicycle handlebar. Do not touch the GAMEBIKE controller when turning the wheel. This may cause damage to the controller or bracket.

Warning! If the unit gets an electrostatic shock, it can be reset by pressing the reset key or remove the batteries and put them back in.

Specifications

Compatible gaming devices	SONY Playstation, Playstation2
Size (W x H x D)	(6.3" x 2.8" x 4.5") (160 mm x 71 mm x 115 mm)
Weight	Approx. 0.66lb (0.3kg)
Operating temperature range	Same as applied game device.

*Specification and actual appearance of components might change without notice due to improvements.

Warranty/Repairs. Service.

2-year Warranty: Applicable to GAMEBIKE Controller only (Excluding accessories)

If the device becomes defective through normal use, it will be repaired or replaced free of charge. Send the device and warranty card to us directly, filling in the purchaser's name, address, date of purchase and a information regarding the malfunction. The warranty does not cover shipping charges incurred by the customer in returning the device to our service department. The product will be returned to the customer on completion of necessary repairs.

CATEYE CO., LTD. Product Service Section

2-8-25, Kuwazu, Sumiyoshi-ku, OSAKA, 546-0041 Japan
PHONE: 81-6-6719-7781 FAX: 81-6-6719-2362
E-mail address: Sales@cateye.co.jp
Attn: CS/PR. LIAISON.

Service & Research Address for North American Customers:

CAT EYE Service & Research Center

1705 14 th St. 115 Boulder, CO 80302
PHONE: 303-443-4595 FAX: 303-473-0006
E-mail: service@cateye.com URL: <http://www.cateye.com>
Toll Free: 800-5CAT EYE



Copyright© 2002
CAT EYE Co., Ltd.

All company, product, and service names are trademarks and registered trademarks of the relevant companies.
"Playstation" is registered trademarks of Sony Computer Entertainment Inc.